



PDS-811/PDS-821

Programmable Device Server with I/O Expansion Slot(s)

Introduction

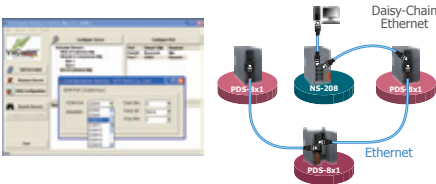
The PDS-811 and PDS-821 programmable device servers (PDS) are compact, modular, intelligent, rugged, and are designed for networking RS-232 and RS-422/485 serial devices to an Ethernet network. The PDS-811 has one I/O expansion slot, while PDS-821 has two I/O expansion slots that can be used to attach various 2- or 4-port serial communication modules. Therefore, a maximum of 4 serial ports can be installed on the PDS-811 or a maximum of 8 serial ports can be installed on the PDS-821.

Note: There is no serial module built-in to the PDS-811 or PDS-821 by default.



The PDS-811 and PDS-821 controllers are equipped with a 2-port 10/100 Base-TX Ethernet Switch that can be used to connect two network segments. The Ethernet Switch processes and routes data on the data-link layer (layer 2) of the OSI model to create a different collision domain per switch port. Using a switch allows you to attain dedicated bandwidth on point-to-point connections with every computer, and therefore run in full duplex mode with no collisions. Furthermore, the built-in 2-port Ethernet Switch on the PDS-811/821 enables network wiring to be simplified by cascading your Ethernet devices.

The PDS-8x1 series contains a built-in operating system, the MiniOS7, which offers a stable and high performance environment that is similar to DOS. The MiniOS7 can boot up the PDS-8x1 series within just one second, with the added benefit of no virus problems and a small footprint. Furthermore, the PDS-8x1 series is designed for low power consumption, maintenance elimination (no hard disk and no fan), and is constructed from fire retardant materials (UL94-V0 level) with a robust case.



Applications

- Factory Automation
- Building Automation
- Home Automation

Features

- Incorporate Serial Devices in an Ethernet network
- "Virtual COM" extends PC COM ports
- VxComm Driver for Windows NT 4.0, 2000/XP/2003 and Vista32
- Programmable Internet/Ethernet Controller
- Watchdog Timer suitable for use in harsh environments
- 2-port 10/100 Base-TX Ethernet Switch (Auto-negotiating, auto MDI/MDI-X, LED indicator)
- Power Reverse Polarity Protection
- 3-wire RS-232 Console Port
- RS-232 Tx/Rx LED Indicators
- System Status LED Indicator
- ESD Protection and Frame Ground Design
- RoHS Compliant with no Halogen
- Built-in High Performance MiniOS7 from ICP DAS
- Low power consumption
- Made from fire retardant materials (UL94-V0 Level)

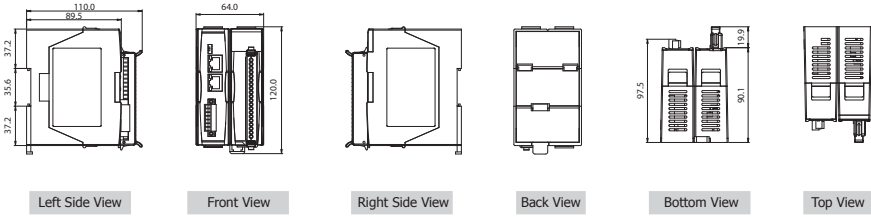


System Specifications

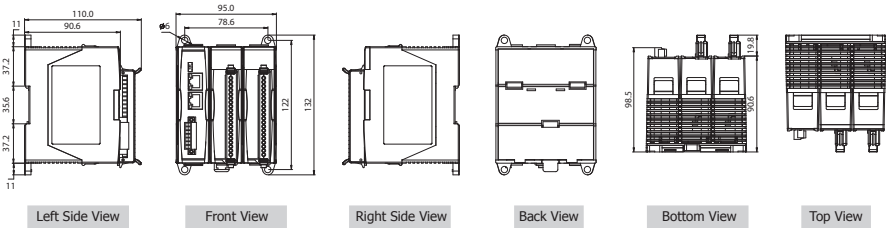
Models	PDS-811	PDS-821
CPU		
CPU	80186, 80 MHz or compatible	
SRAM	512 KB	
Flash Memory	512 KB	
EEPROM	16 KB	
NVRAM	-	
RTC (Real Time Clock)	-	
64-bit Hardware Serial Number	-	
Built-in Watchdog Timer	Yes	
I/O Expansion Slots	1 Slot	2 Slots
Communication Interface		
COM1 (Console)	RS-232 (Tx/D, Rx/D, GND)	
Ethernet	2-port 10/100 Base-TX Ethernet Switch (Auto-negotiating, auto MDI/MDI-X, LED indicator)	
COM Port Formats		
Speed	115200 bps max.	
Data Bit	7, 8	
Parity	None, Even, Odd	
Stop Bit	1	
LED Indicators		
TxD/RxD	Yes (for COM1 console port)	
System	Yes	
Power		
ESD Protection	Yes (with Frame Ground)	
Protection	Power Reverse Polarity Protection	
Required Supply Voltage	+10 V _{cc} ~ +30 V _{cc} (non-regulated)	
Power Consumption	0.6 A @ 5 V for CPU and Backplane, 1.0 A @ 5 V for Plug-in Modules, Total: 8 W	
Mechanical		
Flammability	Fire Retardant Materials (UL94-V0 Level)	
Dimensions (W x L x H, Unit: mm)	64 x 110 x 120	95 x 110 x 132
Installation	DIN-Rail	DIN-Rail or Wall mounting
Environment		
Operating Temperature	-25 °C ~ +75 °C	
Storage Temperature	-40 °C ~ +80 °C	
Humidity	5 ~ 95% RH, non-condensing	

Dimensions (Unit: mm)

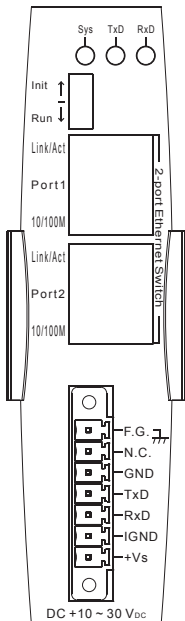
PDS-811



PDS-821



Pin Assignments



Ordering Information

Art. No. 123231

PDS-811 CR Programmable Device Server with 1 Expansion Slot (RoHS). Includes One CA-0910 Cable.

Art. No. 123783

PDS-821 CR Programmable Device Server with 2 Expansion Slots (RoHS). Includes One CA-0910 Cable.

Accessories

CA-0910	9-Pin Female D-Sub & 3-wire RS-232 Cable, 1 m Cable
MDR-20-24	24 V _{DC} /1 A, 24 W Power Supply with DIN-Rail Mounting
NS-205 CR	Unmanaged 5-port Industrial Ethernet Switch (RoHS)

Technische Daten Erweiterungsmodule

- **I-8112iW:** 2 x RS-232 (TxD, RxD, RTS, CTS, DSR, DTR, DCD, RI, GND)
- **I-8114iW:** 4 x RS-232 (TxD, RxD, RTS, CTS, DSR, DTR, DCD, RI, GND)
- **I-8142iW:** 2 x RS-422 (TxD+, TxD-, RxD+, RxD-, GND)
oder 2 x RS-485 (Data+, Data-, GND)
- **I-8144iW:** 4 x RS-422 (TxD+, TxD-, RxD+, RxD-, GND)
oder 4 x RS-485 (Data+, Data-, GND)
- **COM Ports:** Baud Rate: max. 115200 bps
Data bit 7, 8; Stop bit 1, 2; Parity None, Even, Odd
- **LED-Indikatoren:** Communication, Error