

# Quick Installation Guide

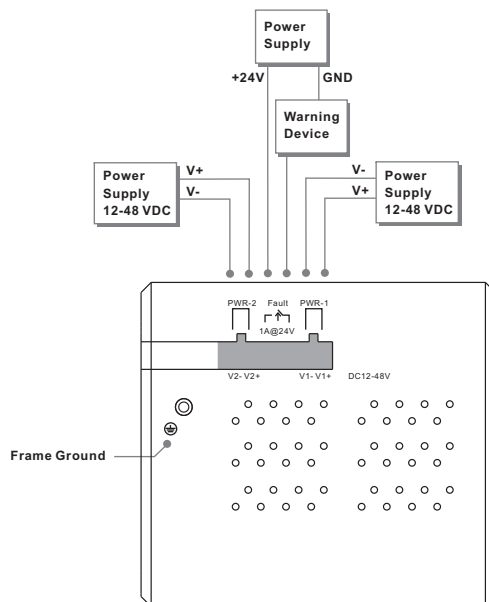
## Introduction

IES-3240 is a managed Redundant Ring Ethernet switch with 24x10/100Base-T(X) ports. With completely support of **O-Ring (recovery time < 10 ms over 250 units of connection)**, the switch can protect your mission - critical applications from network interruptions or temporary malfunctions with its fast recovery technology. All function of **IES-3240** can be managed centralized and convenient by a powerful windows utility: **Open-Vision**. In addition, the wide operating temperature range from -40 to 70°C can satisfy most of operating environment. Therefore, the switch is one of the most reliable choice for highly-managed and Fiber Ethernet application.

## Features

- > World's fastest Ethernet Redundant Ring: **O-Ring (recovery time < 10ms over 250 units of connection)**
- > **Open-Ring** support the other vendor's ring technology in open architecture
- > **O-RSTP** support applications with complex topology
- > **IGMP snooping** for filtering multicast traffic
- > **Port Trunking** for easy of bandwidth management
- > **SNMP v1/v2c/v3** support for secured network management
- > **RMON** for traffic monitoring
- > **Event notification** through Syslog, Email, SNMP trap, and Relay Output
- > **Port lock** to prevent access from unauthorized MAC address
- > **Windows utility (Open-Vision)** support centralized management and configurable by **Web-based interface ,Telnet, Console, CLI**
- > **Dual redundant DC power inputs** on terminal block
- > **Very wide operating temperature range** from -40 to 70°C
- > **Rigid IP-30** housing design

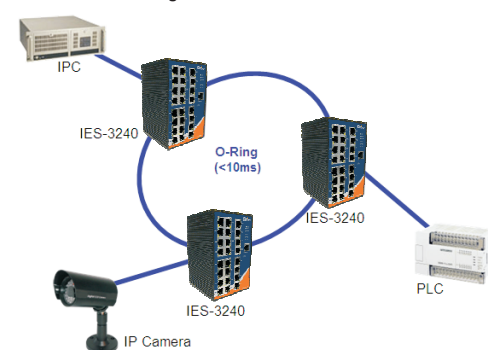
## Power Connection Guide



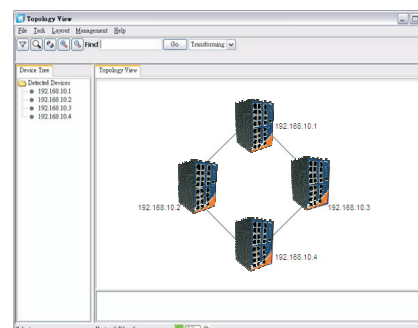
## Open-Vision

IES-3240 is an intelligent switch. Different from other traditional redundant switches, **IES-3240** provides a set of Windows utility (Open-Vision) for user to manage and monitor all of industrial Ethernet switches in the industrial network.

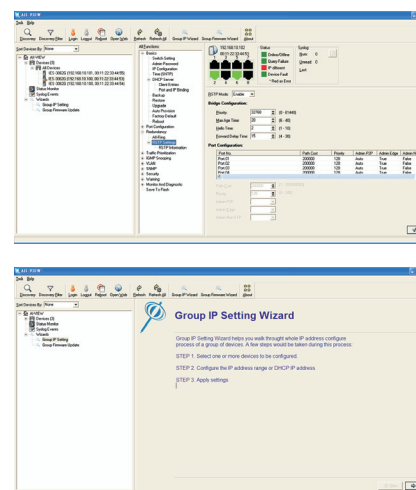
### Network connection



### Topology View



### Monitoring and Configuration interface



# Industrial Managed Ethernet Switch

## Specifications

Switch Model	IES-3240
<b>Physical Ports</b>	
10/100 Base-T(X) Ports in RJ45 Auto MDI/MDIX	<b>24</b>
<b>Technology</b>	
Ethernet Standards	IEEE 802.3 for 10Base-T, IEEE 802.3u for 100Base-TX IEEE 802.3x for Flow control, IEEE 802.3ad for LACP (Link Aggregation Control Protocol) IEEE 802.1D for STP (Spanning Tree Protocol), IEEE 802.1p for COS (Class of Service) IEEE 802.1Q for VLAN Tagging, IEEE 802.1w for RSTP (Rapid Spanning Tree Protocol) IEEE 802.1s for MSTP (Multiple Spanning Tree Protocol), IEEE 802.1x for Authentication IEEE 802.1AB for LLDP (Link Layer Discovery Protocol)
MAC Table	8192 MAC addresses
Priority Queues	4
Processing	Store-and-Forward
Switch Properties	Switching bandwidth: 4.8Gbps Max. Number of Available VLANs: 4096 IGMP multicast groups: 1024 Port rate limiting: User Define
Security Features	Enable/disable ports, MAC based port security Port based network access control (802.1x) VLAN (802.1Q) to segregate and secure network traffic Radius centralized password management SNMPv3 encrypted authentication and access security
Software Features	STP/RSTP/MSTP (IEEE 802.1D/w/s) World's Fastest Ethernet Redundant Ring with recovery time less than 10ms over 250 units TOS/Diffserv supported Quality of Service (802.1p) for real-time traffic VLAN (802.1Q) with VLAN tagging and GVRP supported IGMP Snooping for multicast filtering Port configuration, status, statistics, monitoring, security
Network Redundancy	O-Ring, O-Chain STP RSTP MSTP
RS-232 Serial Console Port	RS-232 in RJ45 connector with console cable. 9600bps, 8, N, 1
<b>LED indicators</b>	
Power indicator	Green: Power LED x 3
R.M. Indicator	Green: indicate system operated in Ring Master mode
Fault Indicator	Amber: Indicate unexcepted event occurred
10/100TX RJ45 Port Indicator	Green for port Link/Act. Amber for Duplex/Collision
<b>Fault contact</b>	
Relay	Relay output to carry capacity of 1A at 24VDC
<b>Power</b>	
Redundant Input power	Dual DC inputs. 12-48VDC on 6-pin terminal block
Power consumption(Typ.)	9.6 Watts
Reverse polarity protection	Present
Overload current protection	Present on terminal block
<b>Physical Characteristic</b>	
Enclosure	IP-30
Dimension (W x D x H)	96(W)x109.2(D)x153.6(H) mm (3.78x4.3x6.05 inch)
Weight (g)	1052g
<b>Environmental</b>	
Storage Temperature	-40 to 85°C (-40 to 185°F)
Operating Temperature	-40 to 70°C (-40 to 158°F)
Operating Humidity	5% to 95% Non-condensing
<b>Regulatory approvals</b>	
EMI	FCC Part 15, CISPR (EN55022) class A
EMS	EN61000-4-2 (ESD), EN61000-4-3 (RS), EN61000-4-4 (EFT), EN61000-4-5 (Surge), EN61000-4-6 (CS), EN61000-4-8, EN61000-4-11
Shock	IEC60068-2-27
Free Fall	IEC60068-2-32
Vibration	IEC60068-2-6
<b>Warranty</b>	5 years

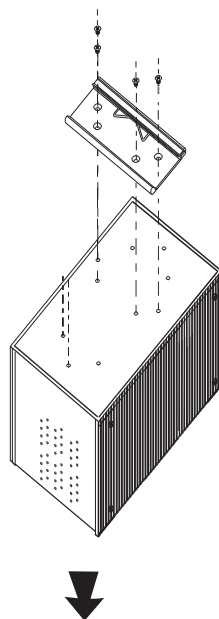
# Quick Installation Guide

# IES-3240

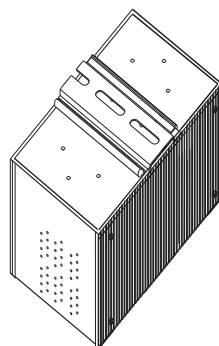
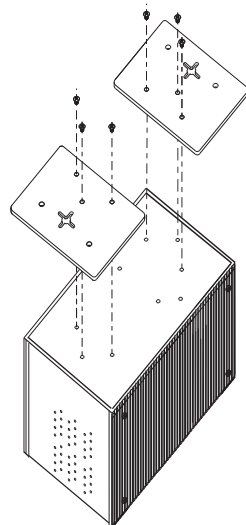
# Industrial Managed Ethernet Switch

## Installation

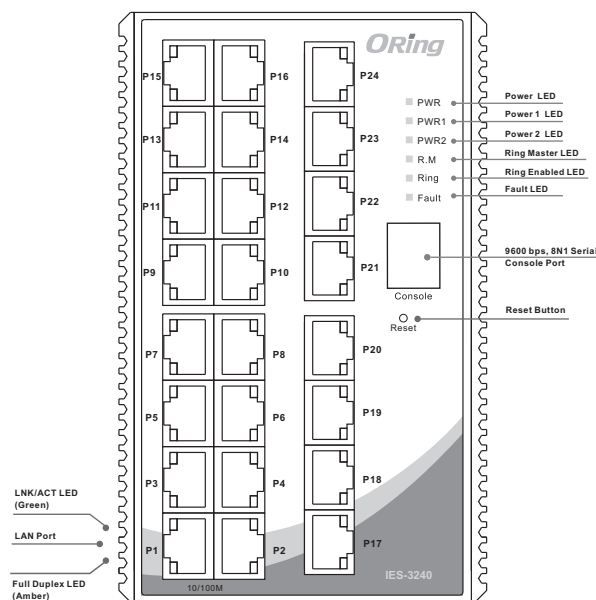
### DIN-Rail Install Step



### Wall-mounted Install Step



## Front Panel



## Packing list

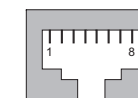
Model Name	Model Description	Accessory
IES-3240	Industrial 24-port Managed Ethernet Switch with 24 x 10/100 Base-T(X) ports	⊙ X 1, ⊙ X 1, ⊙ X 1, ⊙ X 24, ⊙ X 1, ⊙ X 1, ⊙ X 1

## Communication Connections

### 10/100BaseT(X) Ethernet Port Connection

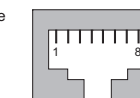
#### RJ45 (8-pin, MDI) Port Pinouts

Pin	Single
1	Tx+
2	Tx-
3	Rx+
6	Rx-

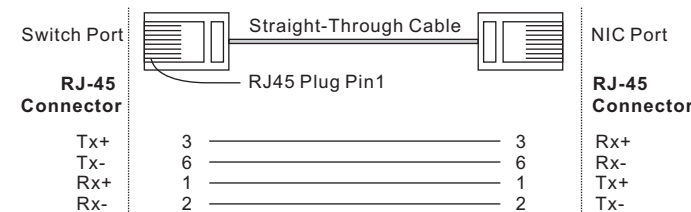


#### RJ45 (8-pin, MDI-X) Port Pinouts

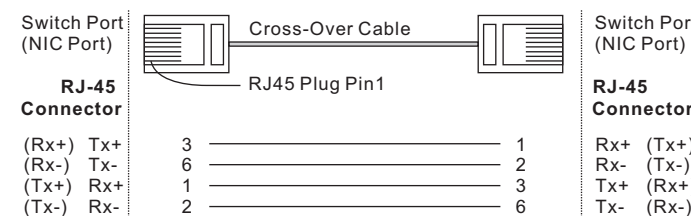
Pin	Single
1	Rx+
2	Rx-
3	Tx+
6	Tx-



#### RJ45 (8-pin) to RJ45 (8-Pin) Straight-Through Cable Wiring

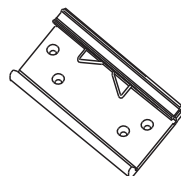


#### RJ45 (8-pin) to RJ45 (8-Pin) Cross-Over Cable Wiring



## Accessory

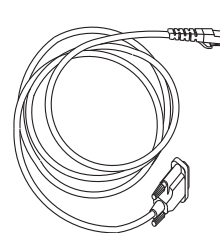
### ① DIN-Rail kit



### ② 6-Pin Terminal block



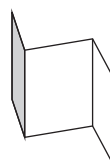
### ③ Console Cable



### ④ Dust Cover



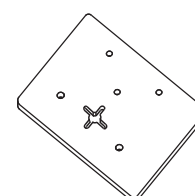
### ⑤ QIG



### ⑥ CD



### ⑦ Wall-mounted kit



**ORing** ORing Industrial Networking Corp.

Copyright © 2010 ORing  
All rights reserved.

FC CE

TEL: +886-2-2218-1066 Website: www.oring-networking.com  
FAX: +886-2-2218-1014 E-mail: support@oring-networking.com